

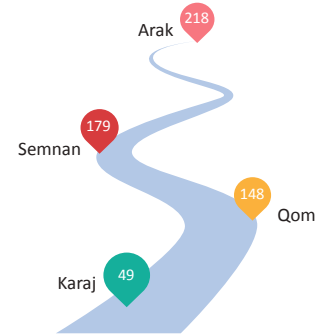
Investment Capacities of Tehran County



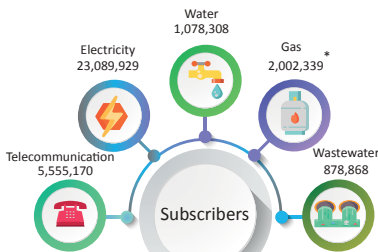
Weather:
 Average Annual Temperature: 17.4 °C
 Average Annual Rainfall: 294.1 ml
 Frosty Days: 40 days
 Average Wind Velocity: 2.7 m/s

| North Latitude | | East Longitude | |
|----------------|---------|----------------|---------|
| Maximum | Minimum | Maximum | Minimum |
| Degree | Minutes | Degree | Minutes |
| 35 | 57 | 51 | 46 |
| | | 51 | 04 |

Area: 1,336km²



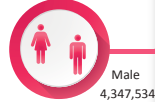
Distance from the County to the Neighboring Provinces (km)



* Total of Tehran, Ray & Shemiranat



Female: 4,389,976



Densities: 6,579



Active Population: 7,210,124



Proportion of Young Population: 17.5%



Districts: 3

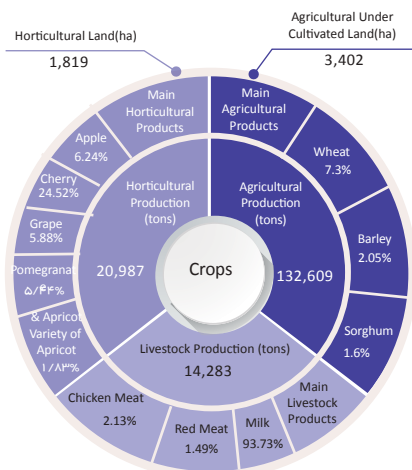
Tourism



Tourist Attractions:

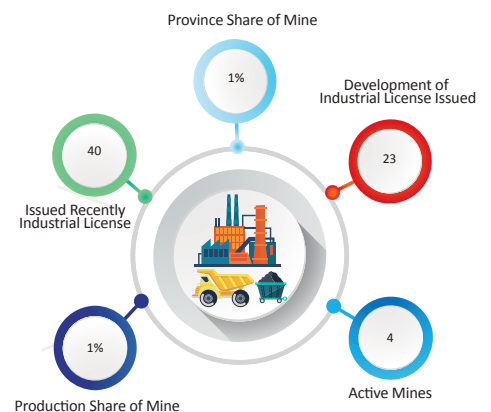
1. Golestan Palace
2. Tehran Grand Bazaar
3. National Museum
4. Tabiat Bridge
5. Milad Tower

Agriculture



Total Land Area (ha): 133,600

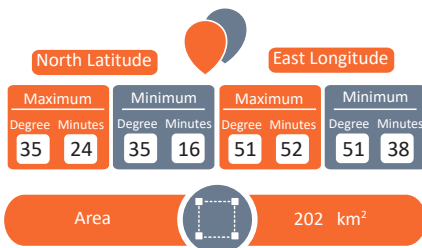
Industry & Mine



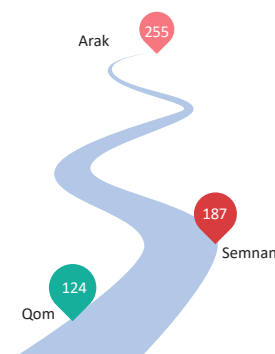
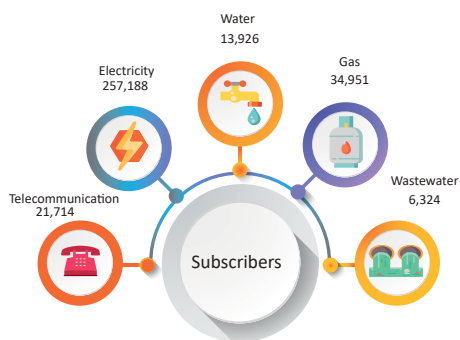
Mines: Lime, Rubble Stone, Plaster

Investment Capacities of

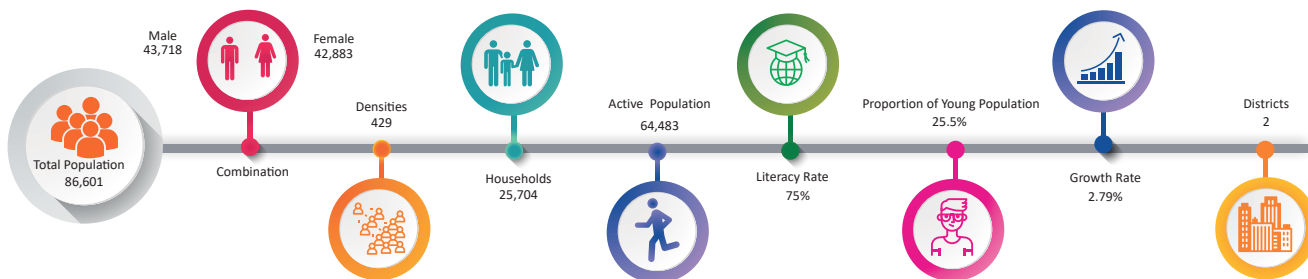
Pishva County



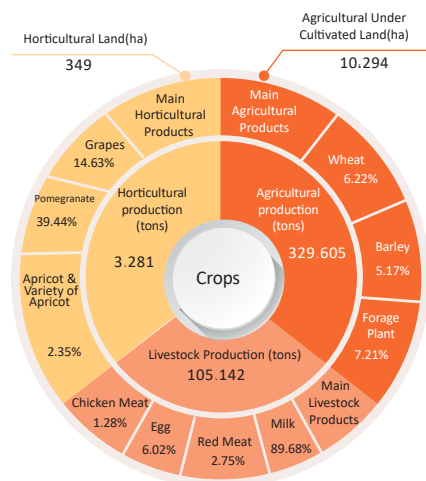
Weather: Cold & Arid
 Average Annual Temperature: 20.1 °C
 Average Annual Rainfall: 131.8 ml
 Frosty Days: 45 days
 Average Wind Velocity: 2.5 m/s



Distance from the County to the Neighboring Provinces (km)



Agriculture



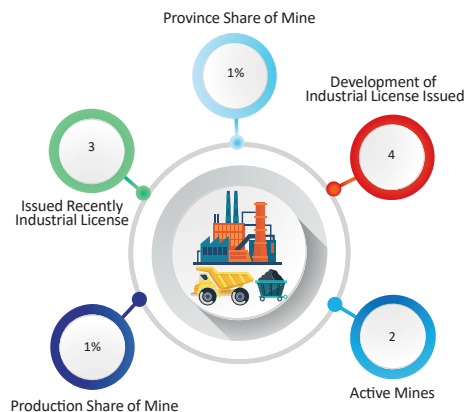
Tourism



Tourist Attractions:

- Shoghali Hill
- Imamzadeh Jafar
- Iraj Castle

Industry & Mine



Mines: Marl, Gravel



Iraj Castle (Pishva)



Gate of National Garden (Tehran)

Investment Capacities of

Pardis County



| North Latitude | | East Longitude | |
|----------------|---------|----------------|---------|
| Maximum | Minimum | Maximum | Minimum |
| Degree | Minutes | Degree | Minutes |
| 35 | 47 | 51 | 53 |
| 35 | 33 | 51 | 41 |

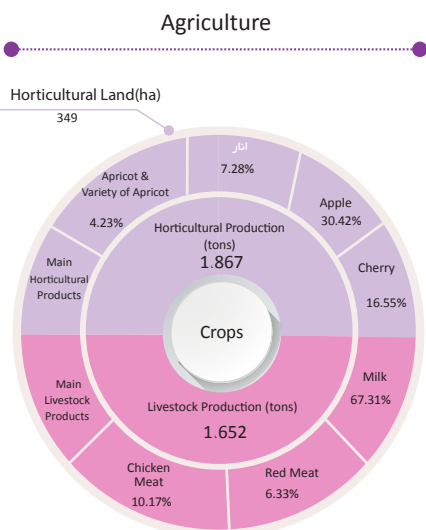
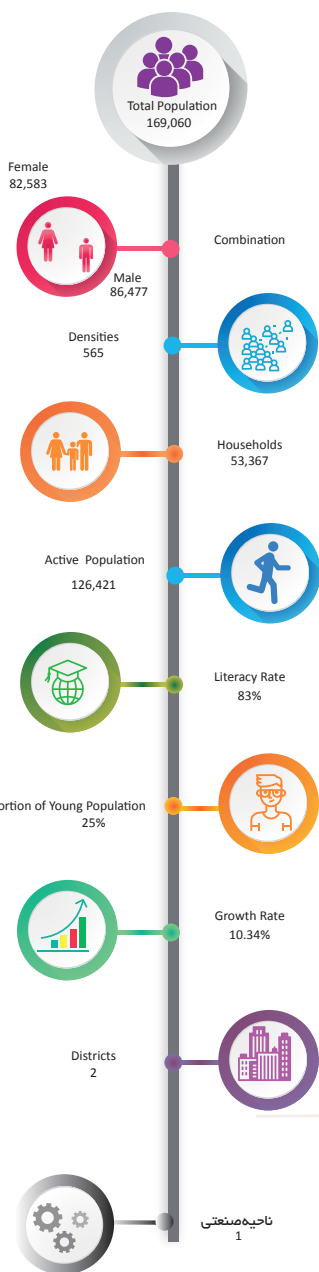
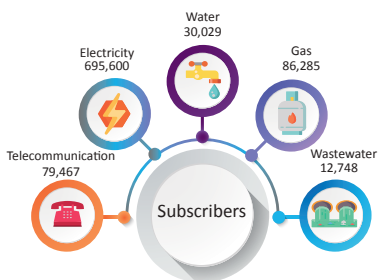
Area: 299 km²



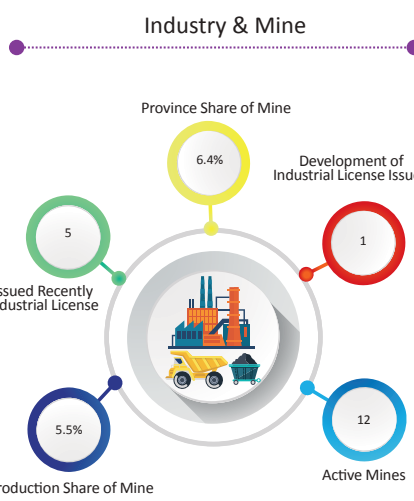
Weather: Cold & Semis-Humid
Average Annual Temperature: 19.1° C
Average Annual Rainfall: 338.7 ml
Frosty Days: 65 days
Average Wind Velocity: 3.4 m/s



Distance from the County to the Neighboring Provinces (km)



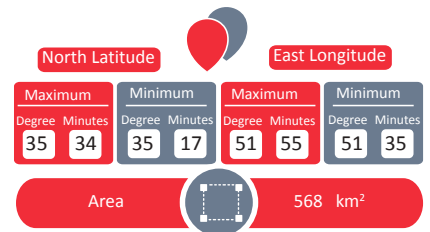
Total Land Area(ha): 29,900



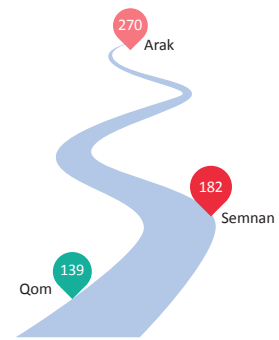
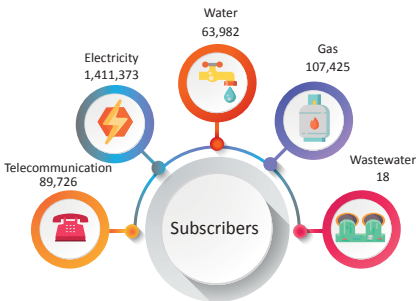
ines: Lime, Rubble Stone, Gravel, Pozzolan, Bentonite

Investment Capacities of

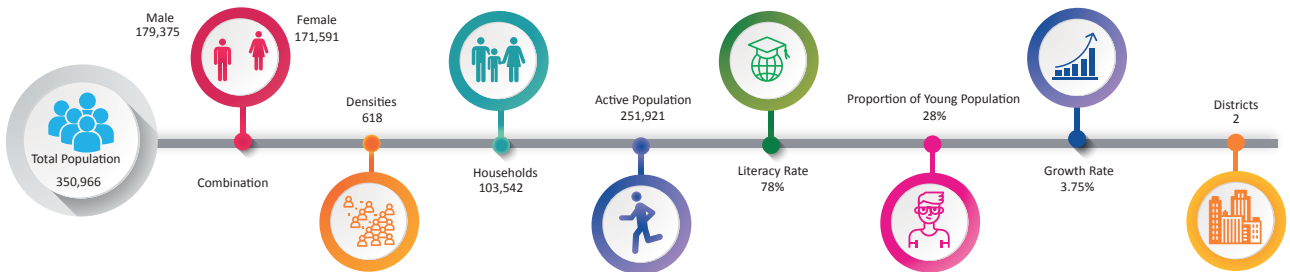
Pakdasht County



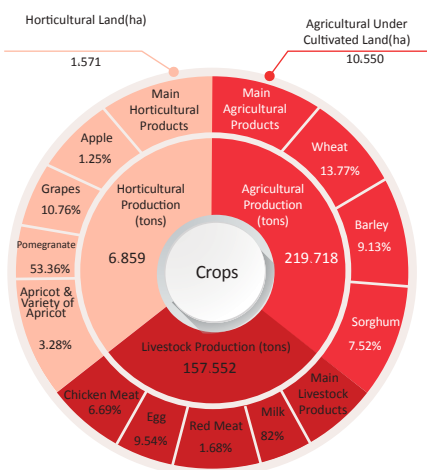
Weather: Cold & Arid
 Average Annual Temperature: 20.1 °C
 Average Annual Rainfall: 199.8 ml
 Frosty Days: 45 days
 Average Wind Velocity: 2.5 m/s



Distance from the County to the Neighboring Provinces (km)



Agriculture



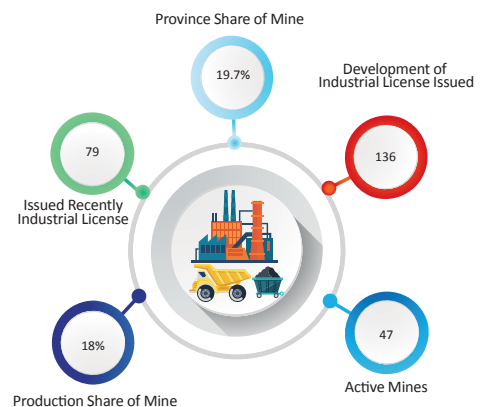
Total Land Area(ha): 56,800

Tourism

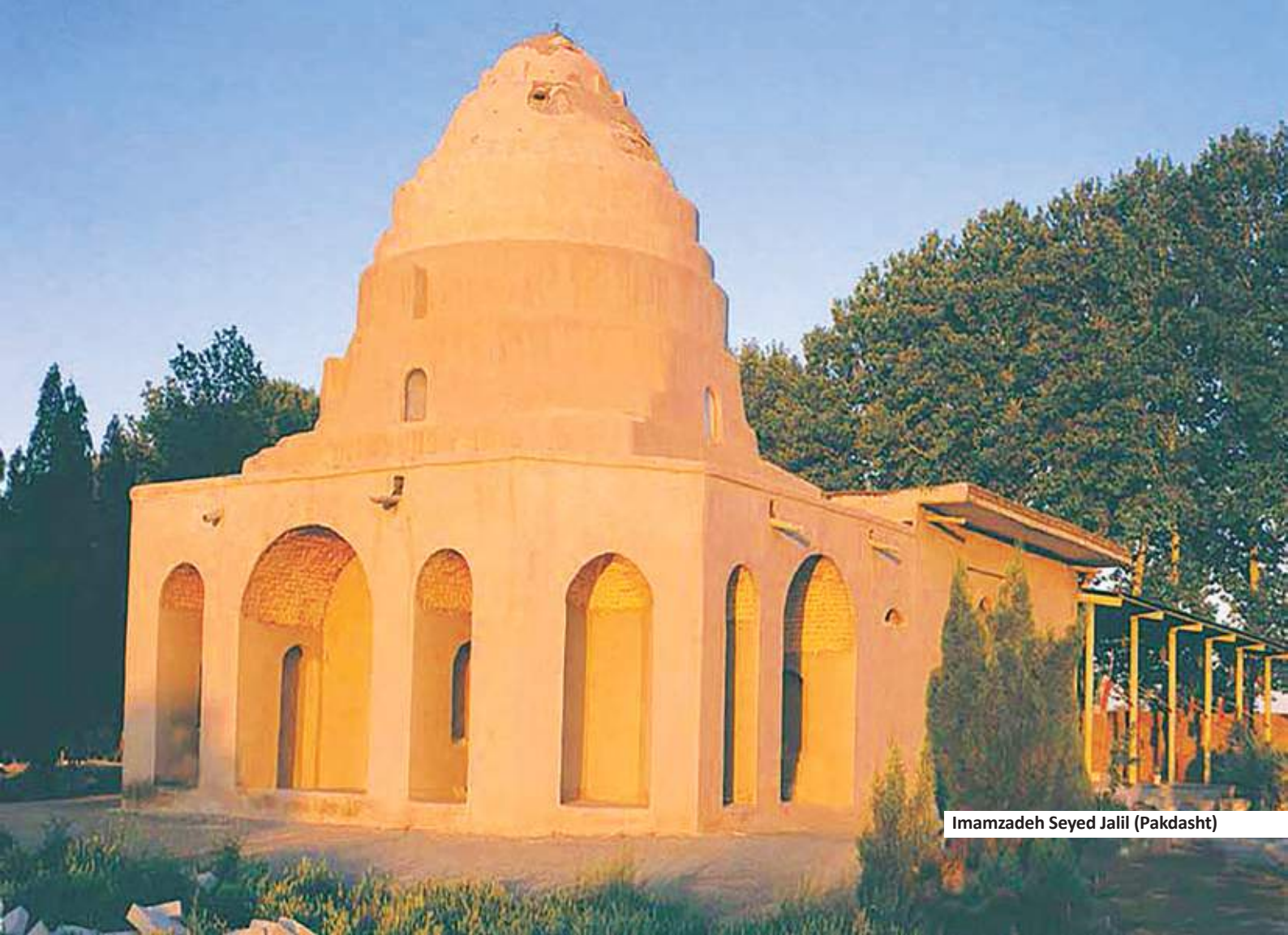


- Tourist Attractions:**
1. Imamzadeh Seyyed Jalil
 2. Torpagh Castle
 3. Yabr Daghlan Glacier

Industry & Mine



Mines: Alluvial sand, Gravel



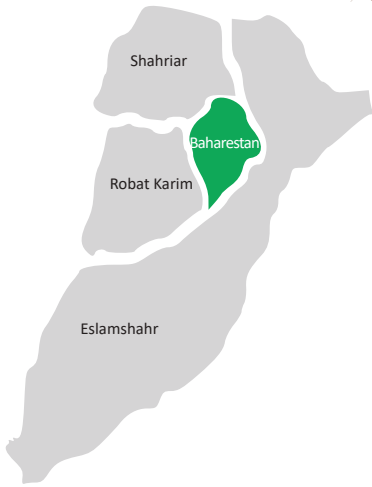
Imamzadeh Seyed Jalil (Pakdasht)



Bumehen Nature (Pardis)

Investment Capacities of

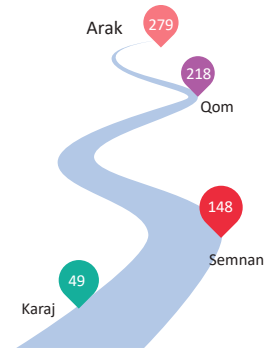
Baharestan County



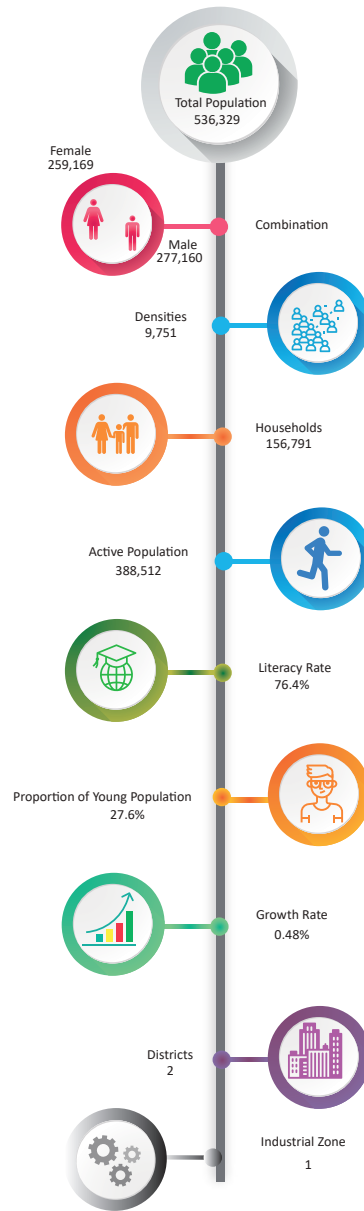
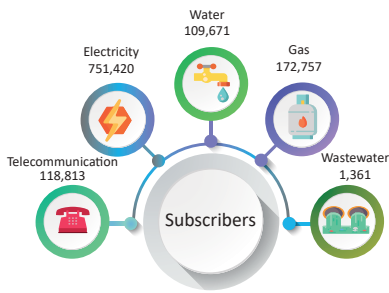
Weather: Cold & Arid
 Average Annual Temperature: 17.5 °C
 Average Annual Rainfall: 193.9 ml
 Frosty Days: 48 days
 Average Wind Velocity: 5 m/s

| North Latitude | | East Longitude | |
|----------------|---------|----------------|---------|
| Maximum | Minimum | Maximum | Minimum |
| Degree | Minutes | Degree | Minutes |
| 35 | 35 | 51 | 12 |
| 35 | 28 | 51 | 07 |

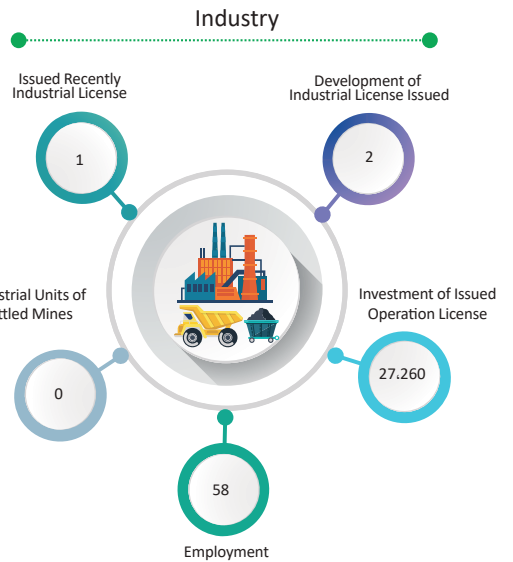
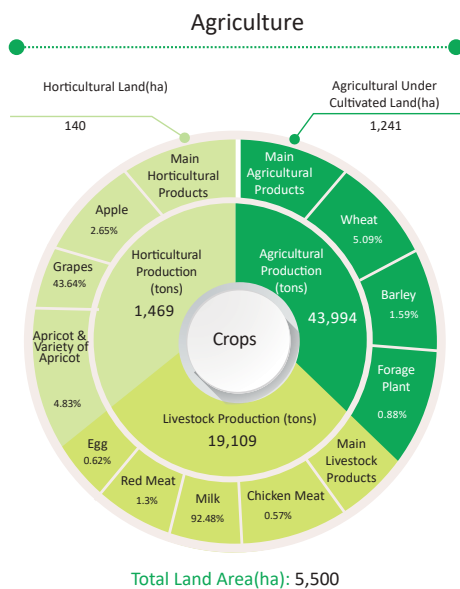
Area: 55 km²



Distance from the County to the Neighboring Provinces (km)



- Tourist Attractions:**
1. Imamzadeh Abou Taleb
 2. Hesarak-e-Bala Hills
 3. Adaran Historic House



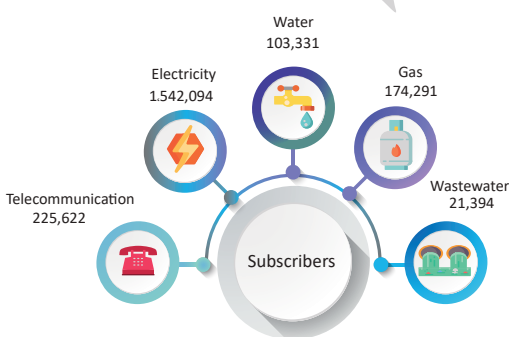
Investment Capacities of Eslamshahr County



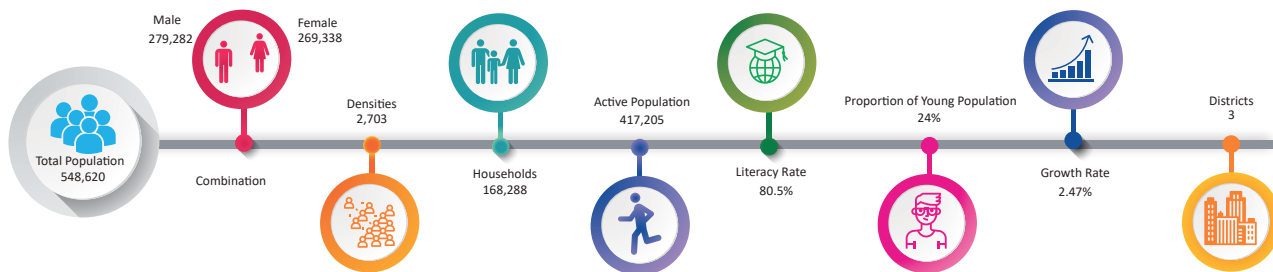
Weather:
 Average Annual Temperature: 17.9 °C
 Average Annual Rainfall: 212.7 ml
 Frosty Days: 37 days
 Average Wind Velocity: 3.4 m/s

| East Latitude | | East Longitude | |
|---------------|---------|----------------|---------|
| Maximum | Minimum | Maximum | Minimum |
| Degree | Minutes | Degree | Minutes |
| 35 | 41 | 51 | 20 |
| 35 | 27 | 51 | 10 |

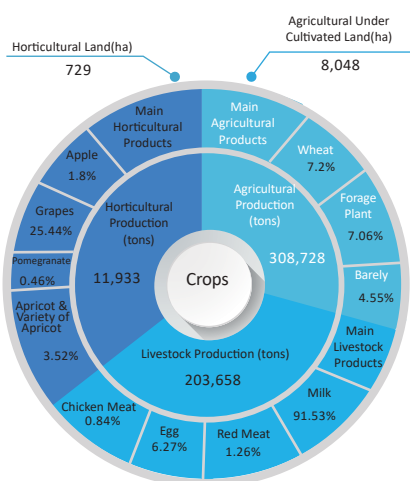
Area: 205 km²



Distance from the County to the Neighboring Provinces (km)



Agriculture



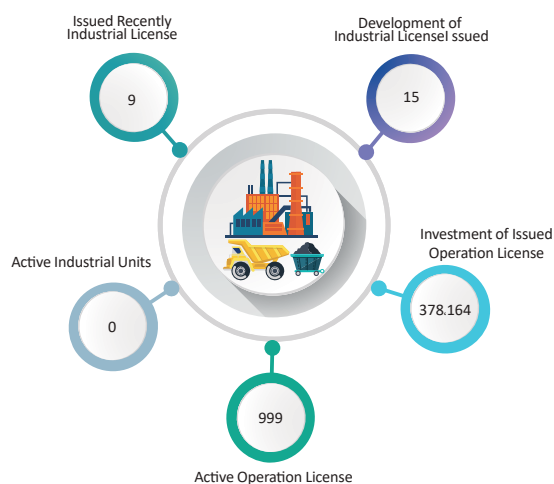
Total Land Area(ha): 20,500

Tourism



- Tourist Attractions:**
1. Mafin-Abad Hill
 2. Imamzadeh Aghil
 3. Vavan Hill

Industry



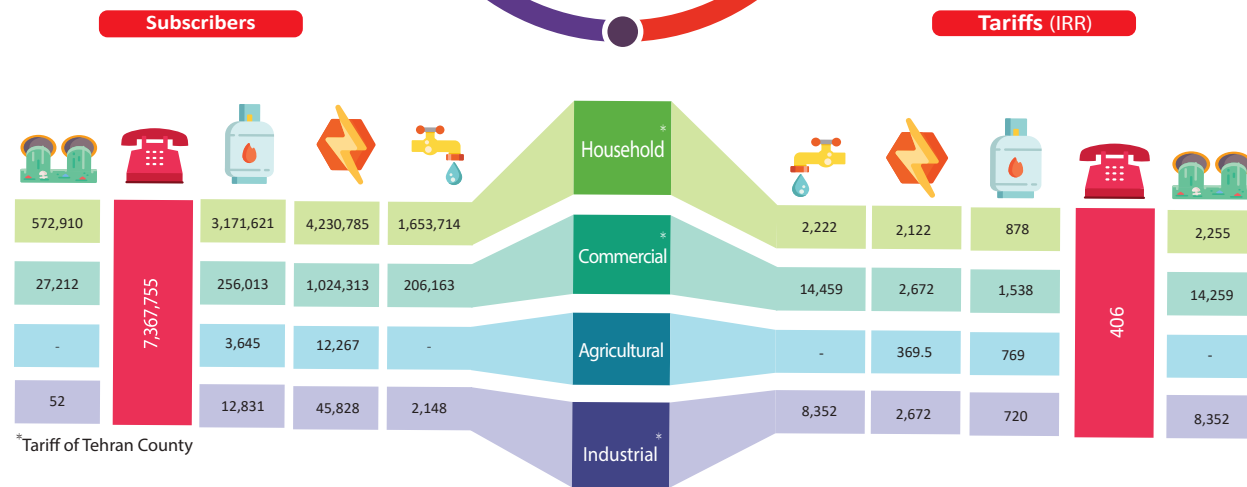


Grave of Unknown Martyrs (EslamShahr)



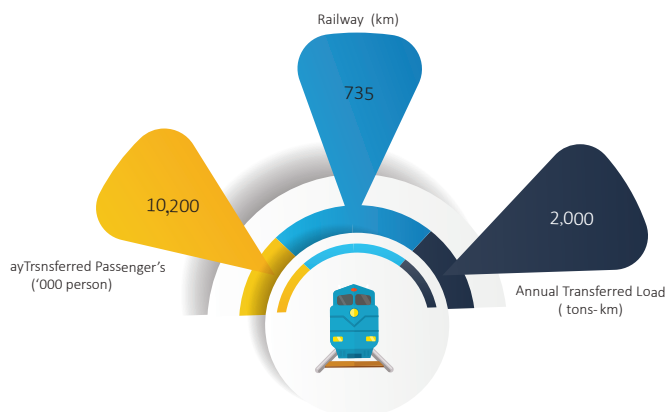
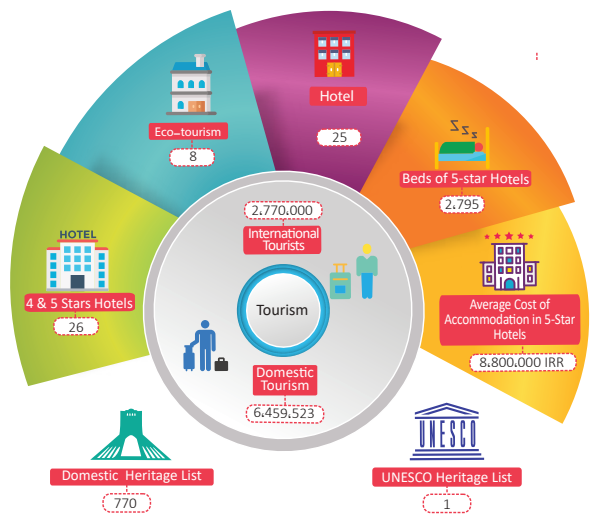
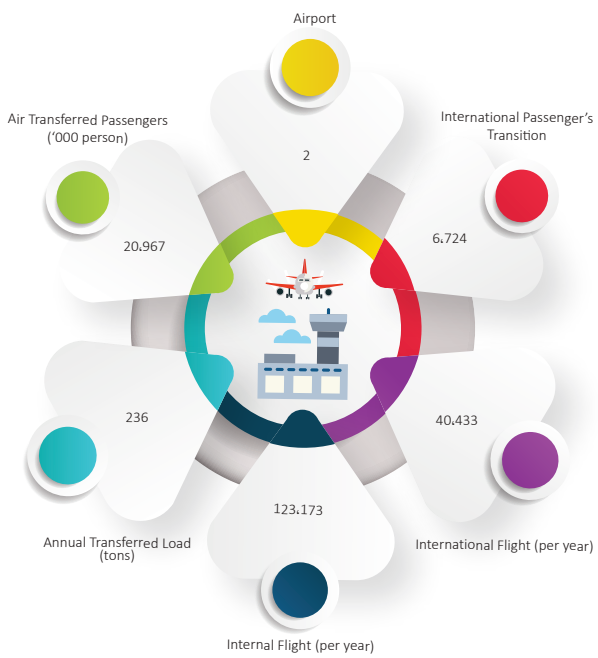
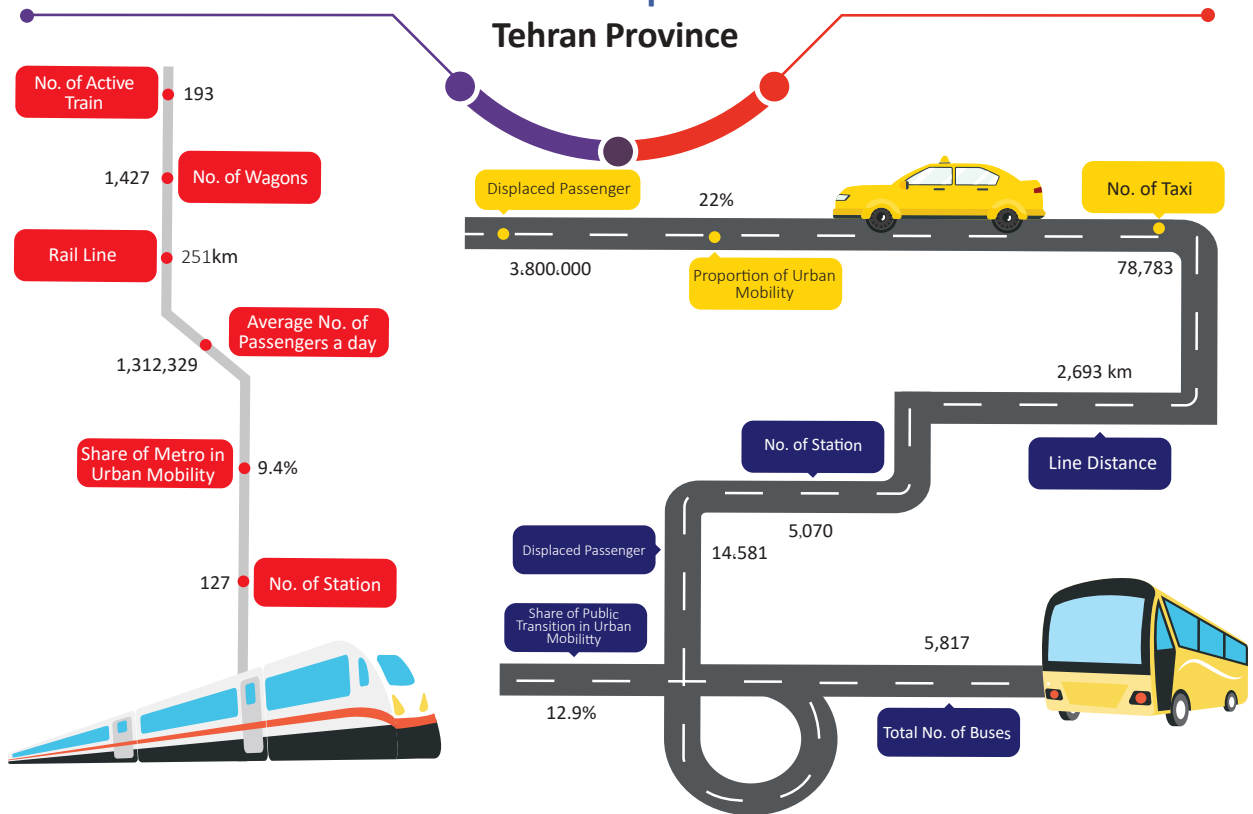
Imamzadeh Abou Taleb (Baharestan)

Investment Capacities of Tehran Province



| Estate/Zone | County | Area of Land (ha) | Area of Industrial Land (ha) | Active Unit | Water | Electricity | Gas | Tele-communication | Treatment Plant | Per Sq m (IRR) | Required ash(%) | Distance from the Province(km) | Clinic | Fire Station |
|------------------------------------|-------------|-------------------|------------------------------|-------------|-------|-------------|-----|--------------------|-----------------|----------------|-----------------|--------------------------------|--------|--------------|
| Paytakht Industrial Zone/Estate | Pakdasht | 669 | 262 | 345 | ✓ | ✓ | ✓ | ✓ | ✓ | 1,580,000 | 30 | 57 | 1 | 1 |
| Parand Industrial Estate | Robat Karim | 358 | 262 | 321 | ✓ | ✓ | ✓ | ✓ | ✓ | 2,960,000 | 30 | 50 | 1 | 1 |
| Pishva Industrial Estate | Pishva | 1,400 | 293 | 11 | ✓ | ✓ | ✓ | ✓ | ✓ | 1,000,000 | 10 | 40 | - | 1 |
| Charmshahr Industrial Estate | Varamin | 200 | 140 | 154 | ✓ | ✓ | ✓ | ✓ | ✓ | 1,300,000 | 20 | 85 | - | 1 |
| Khavaran Industrial Estate | Tehran | 182 | 15 | - | ✓ | ✓ | ✗ | ✓ | ✗ | - | - | 20 | - | - |
| Kharazmi Industrial Estate | Pakdasht | 324 | 138 | 63 | ✓ | ✓ | ✓ | ✓ | ✓ | 1,720,000 | 30 | 50 | 1 | 1 |
| Damavand Industrial Estate 2 | Damavand | 213 | 60 | 2 | ✓ | ✓ | ✓ | ✓ | ✗ | - | - | 60 | - | - |
| Salarieh Industrial Estate | Varamin | 504 | 360 | 114 | ✓ | ✓ | ✓ | ✓ | ✓ | 1,510,000 | 30 | 85 | 1 | 1 |
| Shams Abad Industrial Estate | Ray | 2,891 | 1,461 | 1,430 | ✓ | ✓ | ✓ | ✓ | ✓ | 3,420,000 | 30 | 42 | 1 | 2 |
| Shaheriar Industrial Estate | Shahriar | 408 | 200 | - | ✓ | ✓ | ✗ | ✓ | ✗ | 1,610,000 | 30 | 70 | - | - |
| Abbas Abad Industrial Estate | Pakdasht | 1,129 | 690 | 1,266 | ✓ | ✓ | ✓ | ✓ | ✓ | 2,650,000 | 30 | 45 | 1 | 2 |
| Tehran Fanavaran Industrial Estate | Tehran | 10 | - | - | ✓ | ✗ | ✗ | ✓ | ✗ | - | - | 20 | - | - |
| Firooz kauh Industrial Estate | Firooz kauh | 203 | 82.6 | 30 | ✓ | ✓ | ✓ | ✓ | ✓ | 1,920,000 | 10 | 120 | 1 | 1 |
| Firooz kauh Industrial Estate 2 | Firooz kauh | 422 | 240 | - | ✓ | ✓ | ✗ | ✗ | ✗ | - | - | 130 | - | - |
| Qarchak Industrial Estate | Qarchak | 775 | 204 | 56 | ✓ | ✓ | ✗ | ✓ | ✗ | 1,940,000 | 30 | 35 | - | - |
| Nasir Abad Industrial Estate | Robat Karim | 274 | 150 | 424 | ✓ | ✓ | ✓ | ✓ | ✓ | 3,240,000 | 30 | 35 | 1 | 1 |
| Aeineh varzan Industrial zone | Damavand | 28.8 | 18 | 35 | ✓ | ✓ | ✓ | ✓ | ✓ | 1,850,000 | 30 | 60 | - | 1 |
| Bijin-e Ray Industrial zone | Ray | 30 | 25 | 14 | ✓ | ✓ | ✓ | ✓ | ✗ | 1,180,000 | 30 | 35 | - | 1 |
| Dehak Industrial zone | Malard | 50 | 32.4 | 9 | ✓ | ✓ | ✓ | ✓ | ✗ | 1,980,000 | 30% | 70 | - | - |
| Katalan Industrial zone | Firooz kauh | 20 | 11.5 | - | ✓ | ✗ | ✗ | ✗ | ✗ | - | - | 120 | - | - |
| Molla Aghae Industrial Zone | Varamin | 50 | 17 | - | ✓ | ✓ | ✓ | ✓ | ✗ | - | - | 45 | - | - |

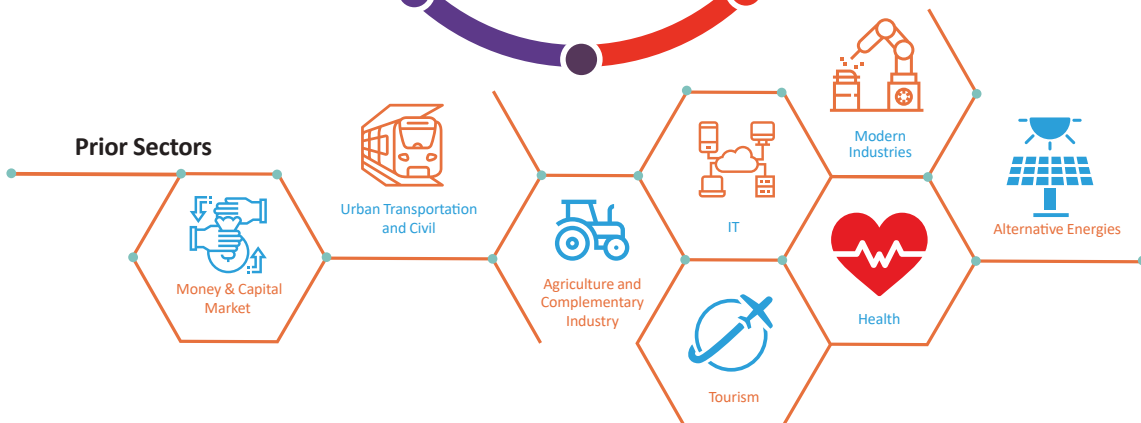
Investment capacities of Tehran Province



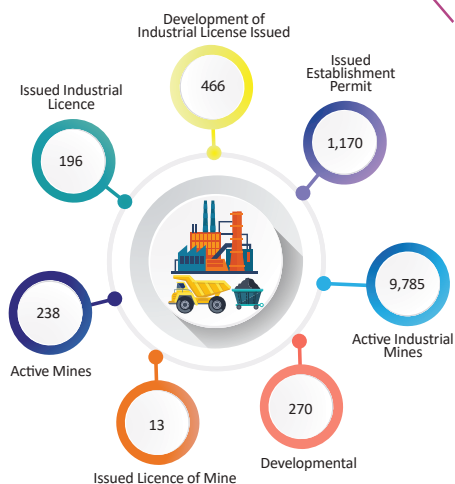
Tourism Attractions



Investment Capacities of Tehran Province



Industry & Mine



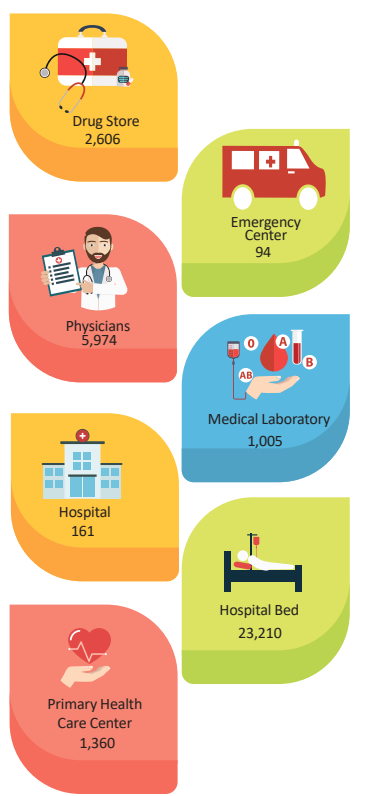
Main Industrial Activities:

Metal Products, Food Industries, Chemical Products, Machinery and Equipments, Motor Vehicle Transportation

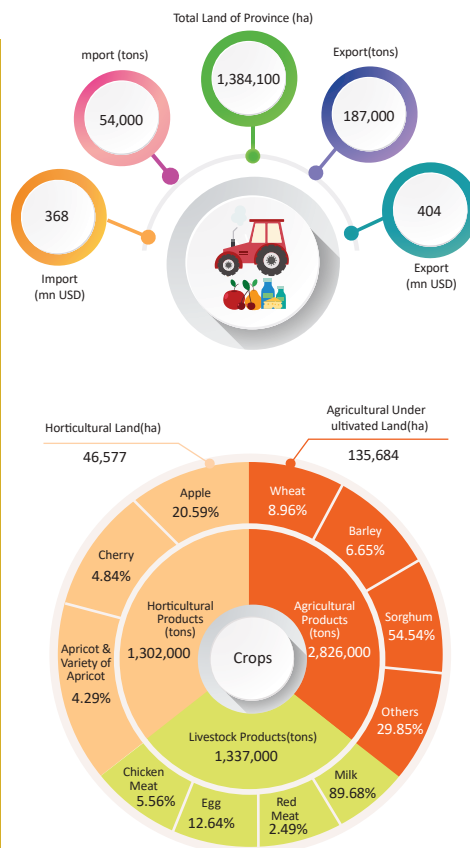
Active Mines :

Gravel, Rubble Stone, Lime Sone, Plaster, Manganese Stone, Sodium Sulfate, Phosphate, Potassium and Iodine, Silica, Bauxit, Kaolinite, Fire Clay, Granite, Strontium Sulfate

Health



Agriculture



Total Trading Value

8,354,836 bn IRR



Capital Market

rice Index equivalence)

117,812

Value 7 bn USD



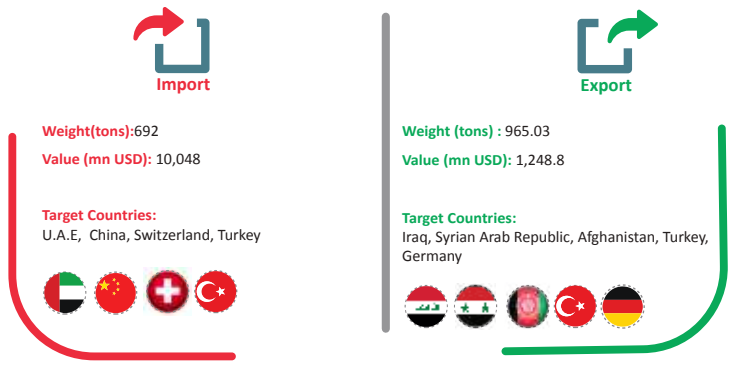
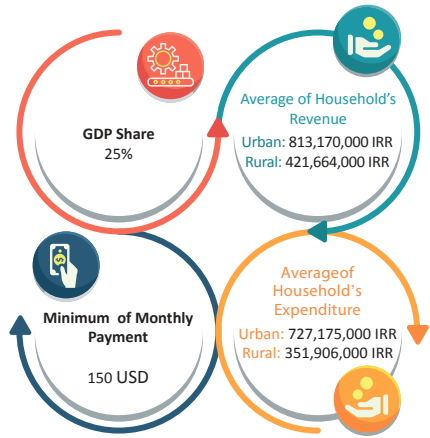
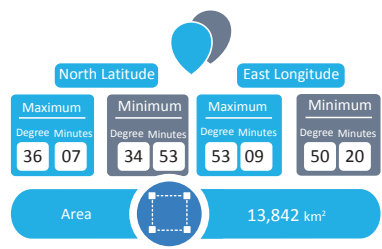
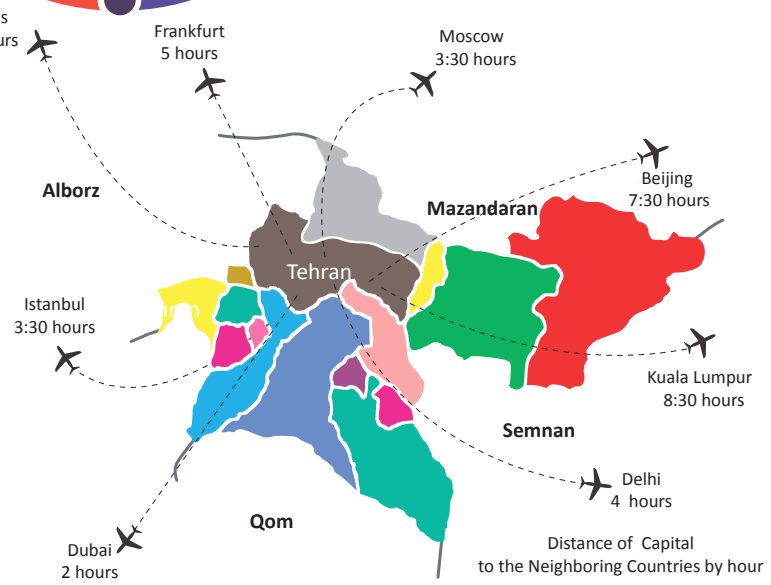
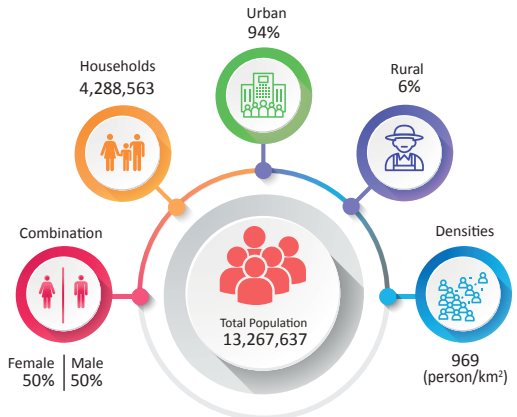
Foreign Investment Projects

Projects 217

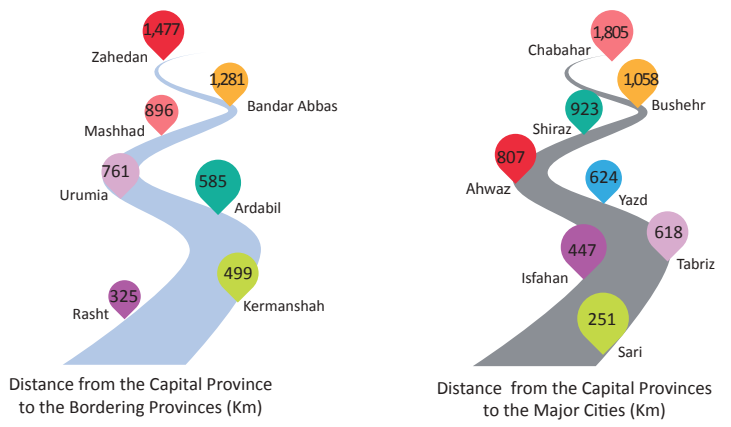
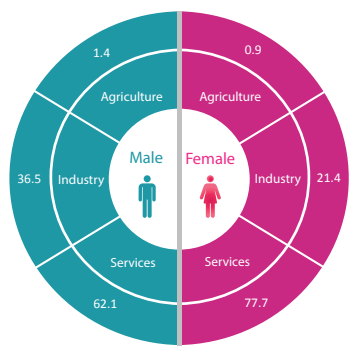
Investment Capacities of

Tehran Province

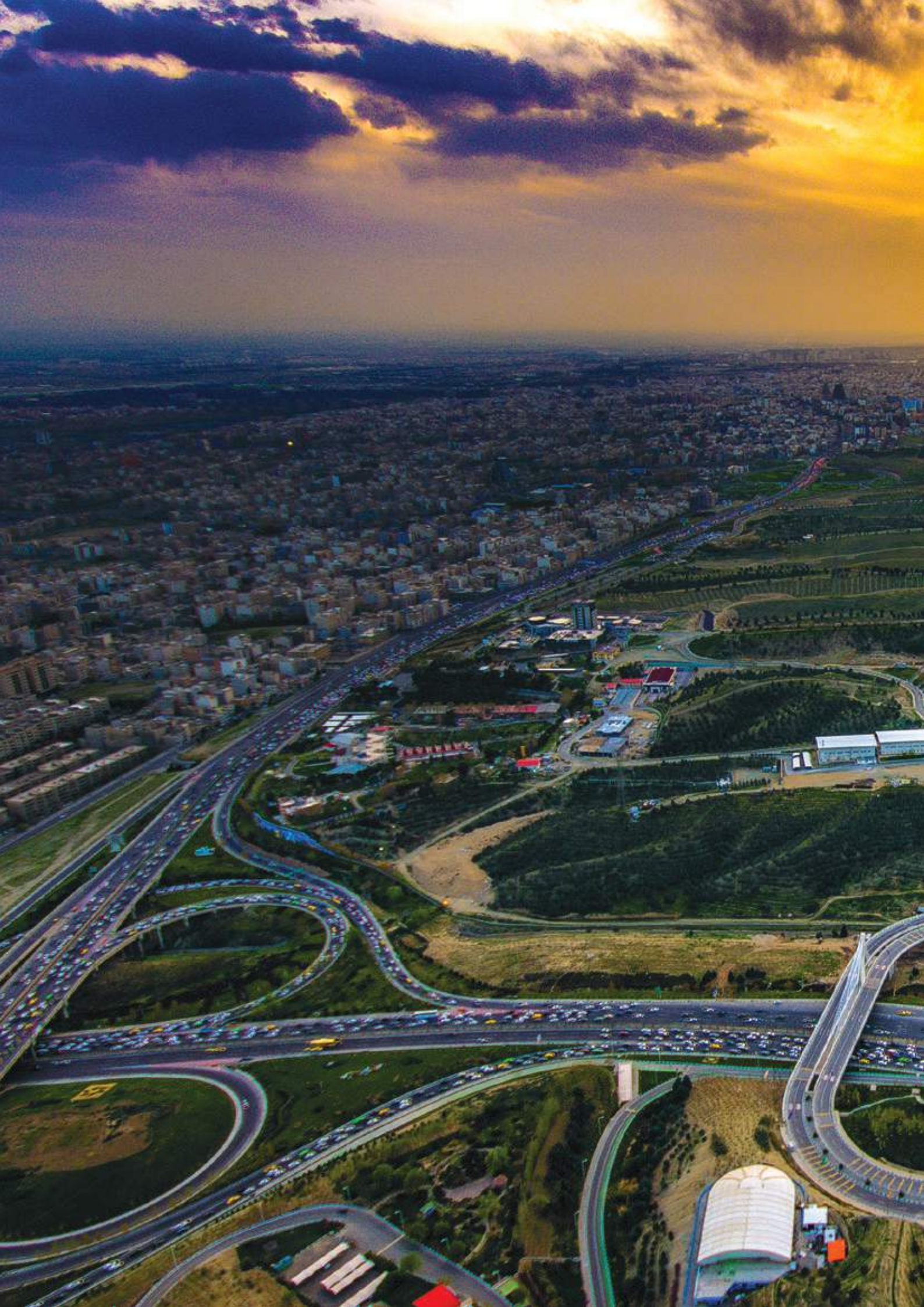
Weather: Cold & Arid (temperate)
 Average Annual Temperature: 17.5 °C
 Average Annual Rainfall: 194 ml
 Frosty Days: 28 days
 Maximum Wind Velocity: 32 m/s



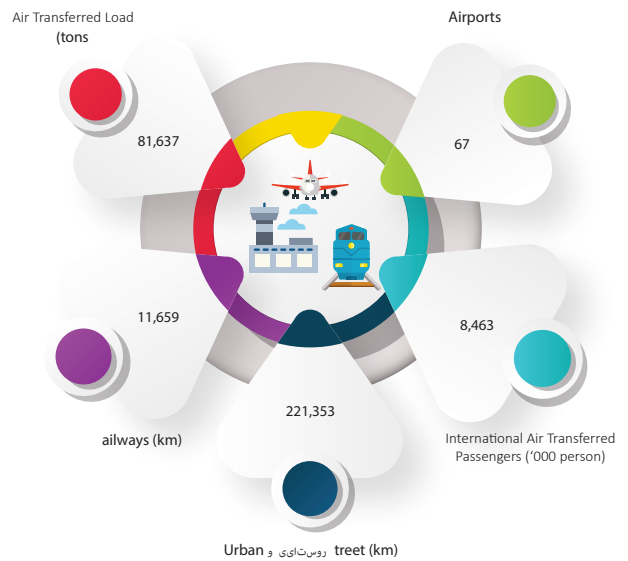
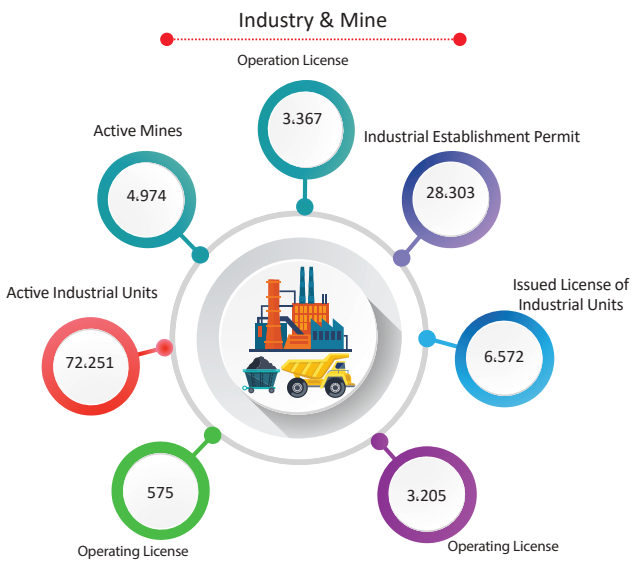
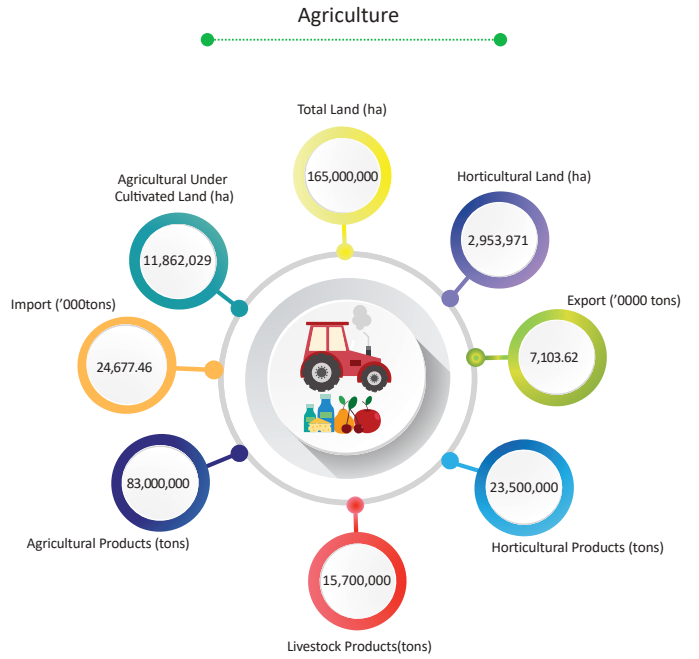
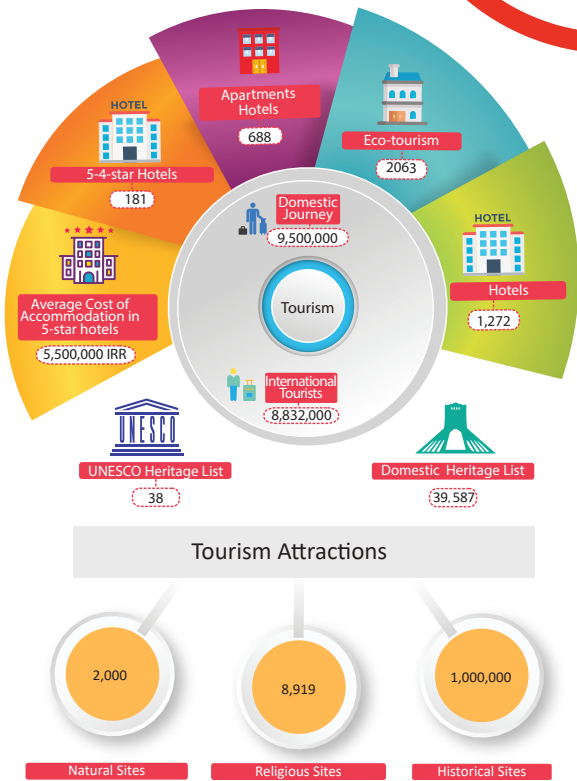
Employment share in Different Economic Sectors



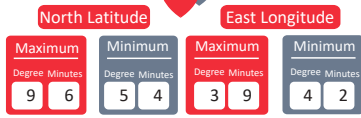




Investment Capacities of Iran



Investment Capacities of Iran



Europe

Central Asia



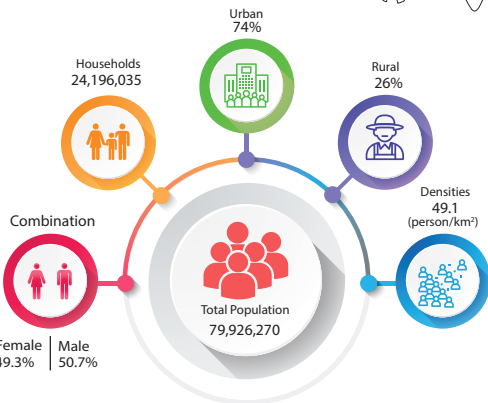
Cities
1,246



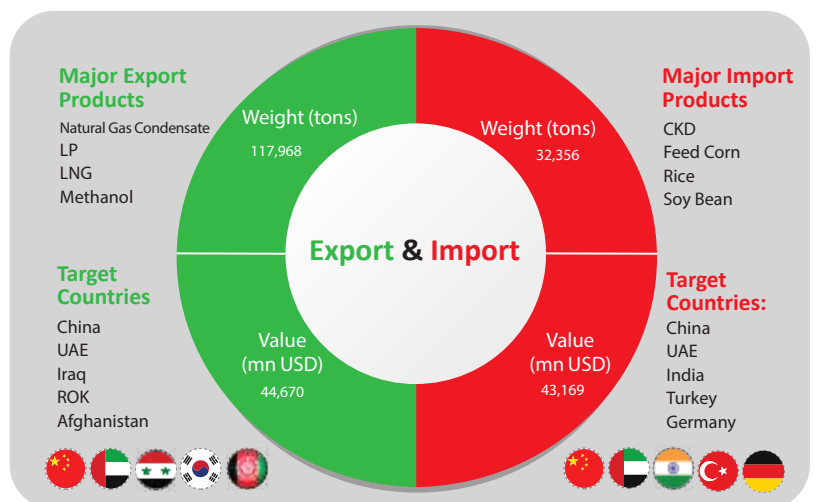
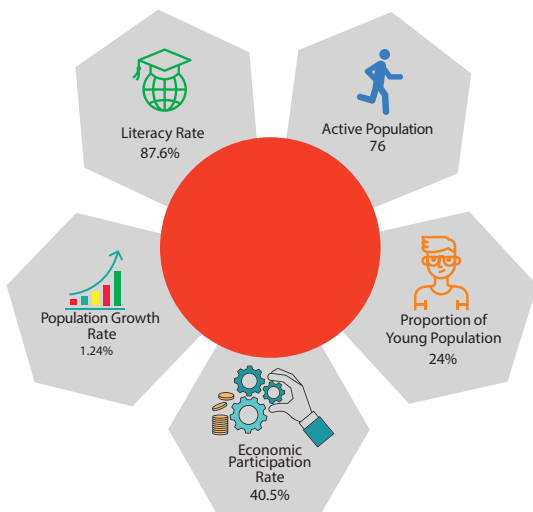
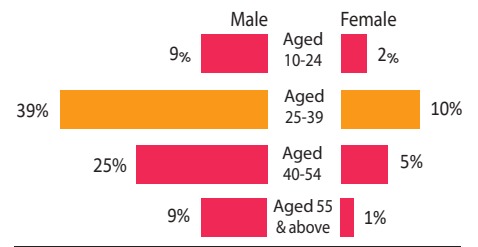
Counties
429

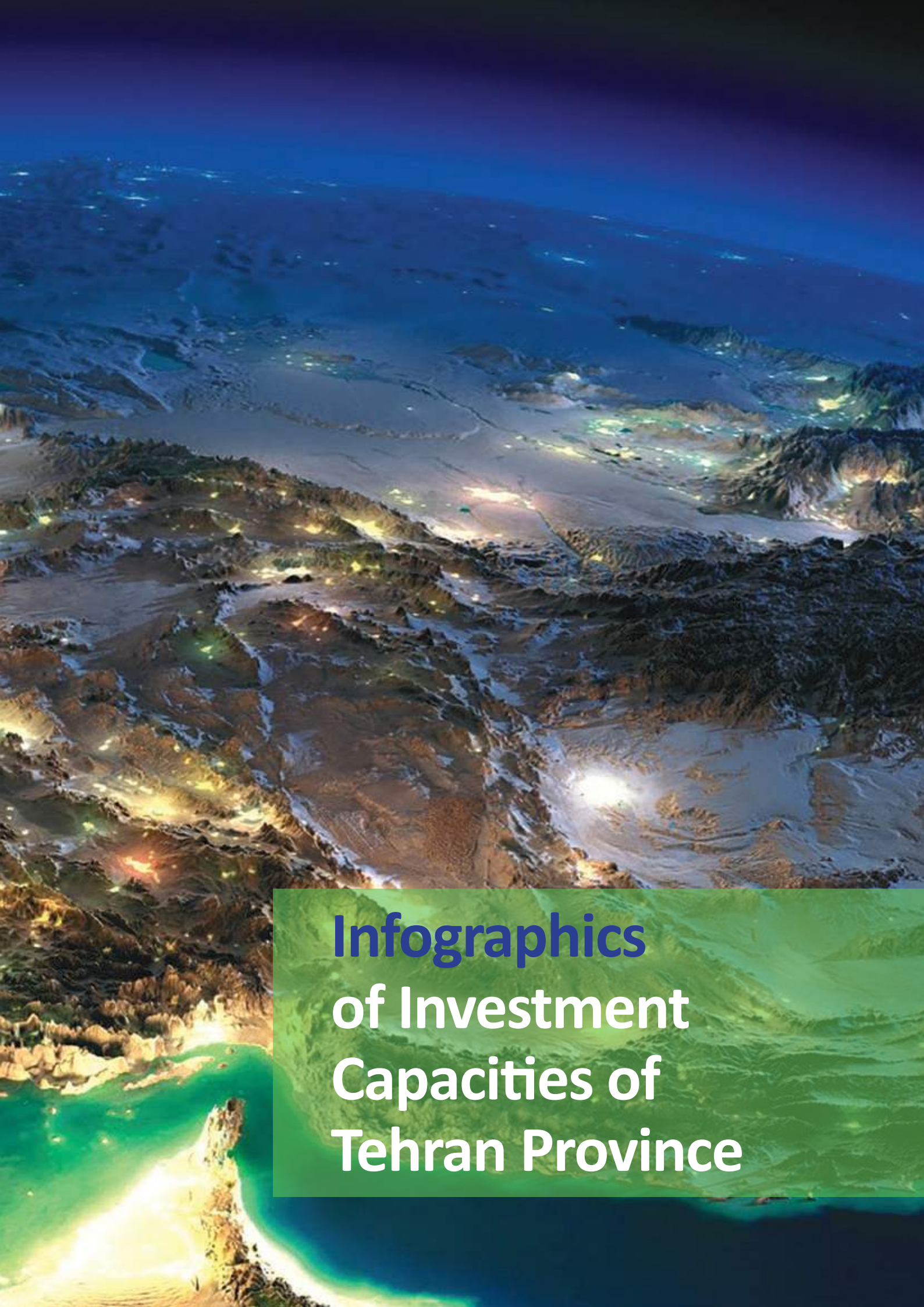
Africa

Southern Asia



Age Combination of Active Population





Infographics
of Investment
Capacities of
Tehran Province

Contents

| | |
|--|-----------|
| Investment Capacities of Iran | 8 |
| Investment Capacities of Teharn Province | 12 |
| Investment Capacities of Eslamshahr County | 17 |
| Investment Capacities of Baharestan County | 18 |
| Investment Capacities of Pakdasht County | 20 |
| Investment Capacities of Pardis County | 21 |
| Investment Capacities of Pishva County | 23 |
| Investment Capacities of Teharn County | 24 |
| Investment Capacities of Damavand County | 26 |
| Investment Capacities of Robat Karim County | 27 |
| Investment Capacities of Rey County | 29 |
| Investment Capacities of Shemiranat County | 30 |
| Investment Capacities of shahriar County | 32 |
| Investment Capacities of Firooz Kouh County | 33 |
| Investment Capacities of Qods County | 35 |
| Investment Capacities of Qarchak County | 36 |
| Investment Capacities of Malard County | 38 |
| Investment Capacities of Varamin County | 39 |
| Investment Services Center of Tehran | 40 |



The role, position and the special potentials of investing in Tehran province, Tehran Investment Service Centre attempts to provide information and provincial investment potentials clearly as the referral centre and provide services, complete knowledge, make decision for investment to the international potential investors.

Respectively, information and capacities of 8 prior sectors have been identified including renewable energies, public transportation systems and civil projects, financial and capital markets, modern industries, IT, agriculture, processing and complementary industries, tourism and health tourism in the collection of info-graphics divided by counties to offer sufficient and precise data for the economic activators.

In addition to my appreciation of the related executive departments and colleagues in Tehran Investment Service Centre providing the information to publish and compile the deserved mentioned book, I hope the provided information will be beneficial to potential investors.

Farzaneh Dehnadi
Minister's Representative,
General Director & Vice President of Investment
Services Center of Tehran Province



Tehran, as the capital and economic heart-beat of Iran, enjoys vast national and international capacities for investment and possesses suitable sectors for attraction of investment due to its strategic infrastructure; proximity to central highways; connection to the East, West, North and South of country; high contribution to the economic indices; presence of Tehran and numerous other highly-active cities; establishment of one third of mega industries in the district; extensive air and land transportation facilities; expert, educated human resources; major service centres at the national and international levels; natural, historical, religious and cultural attractions; recreational areas and tourism facilities; suitable climate and arable land; etc.

The importance of investment attraction to assist in growth and development of the economy is inevitable and a necessity. Therefore, attracting investment, particularly international, has been defined as a top priority in the economic policies of the province and all provincial managers and executive departments are prepared to handle all investment affairs in the province.

Considering the abovementioned items, all international and Iranian investors are welcomed. The efforts of all colleagues at Tehran Investment Service Centre is appreciated. The organization's main duty is to guide and assist investors, to this end, all investment affairs in Tehran province will be handled to the best of our abilities.

Mohsen Mansoori
Governor-general & President of Investment
Services Center of Tehran Province

*In the name of GOD
the compassionate
the merciful*

Title & Author : Investment Capacities of Tehran Province/ Investment Services Center of Tehran, Ministry of Economic Affairs & Finance General Directorate of Economic Affairs & Finance of Tehran Province

Report Manager Farzaneh Dehnadi; Report Team Vaghef Behroozi ... [et al.].

Publication : Tehran; Mahkameh, 2019.

Specifications : 80 p.: Pictorial (colorful).

ISBN : 9786008731795

Listing Type : FIPA

Note : Report team Vaghef Behroozi, Ali Kashmari, Somaye Paykari, Zahra Amin Afshar

Subject : Investment-- Iran--Tehran--Analysis

Subject: Investment analysis--Iran--Tehran

Entry : Dehnadi, Farzaneh,1970

Entry : Behroozi, Vaghef, 1979

Entry : Iran, Ministry of Economic Affairs & Finance General Directorate of Economic Affairs & Finance of Tehran Province, Investment Services Center

Entry : Iran, Ministry of Economic Affairs & Finance General Directorate of Economic Affairs & Finance of Tehran Province

Entry : Asre Kasbokar Iranian Karina Inst.

Library of Congress Control Number (LCC) : HG 5720.2

Dewey Classification : 332.60955122

National Bibliography Number : 5707528

Report ID:

Report Manager: Farzaneh Dehnadi, Minister's Representative, General Director & Vice President of Investment Services Center of Tehran Province

Repor Team: Vaghef Behroozi, Somaye Paykari, Ali Kashmari, Zahra Amin Afshar

Designed by: Iran Business Time Inst.

Date: 2019



Add: No.136, Mirdamad Blvd, Tehran, Iran. Postal Code: 1548944911

Tel:+98 21-22903005 Fax:+98 21-22225079

www.investintehran.ir

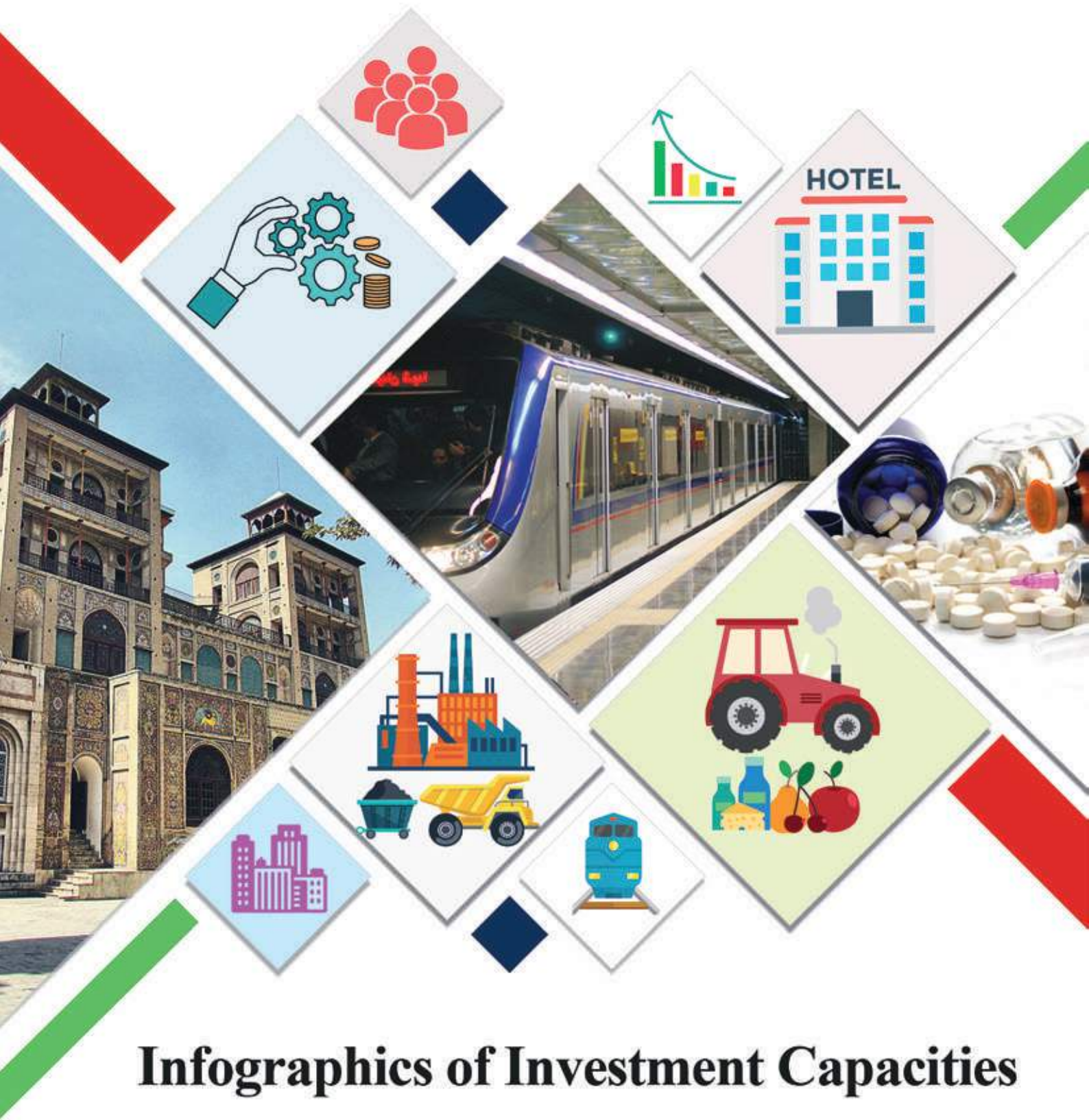
info@investintehran.ir



Investment Services Center
of Tehran Province



Ministry of Economic Affairs & Finance
General Directorate of Economic Affairs and
Finance of Tehran Province



Infographics of Investment Capacities of Tehran Province